

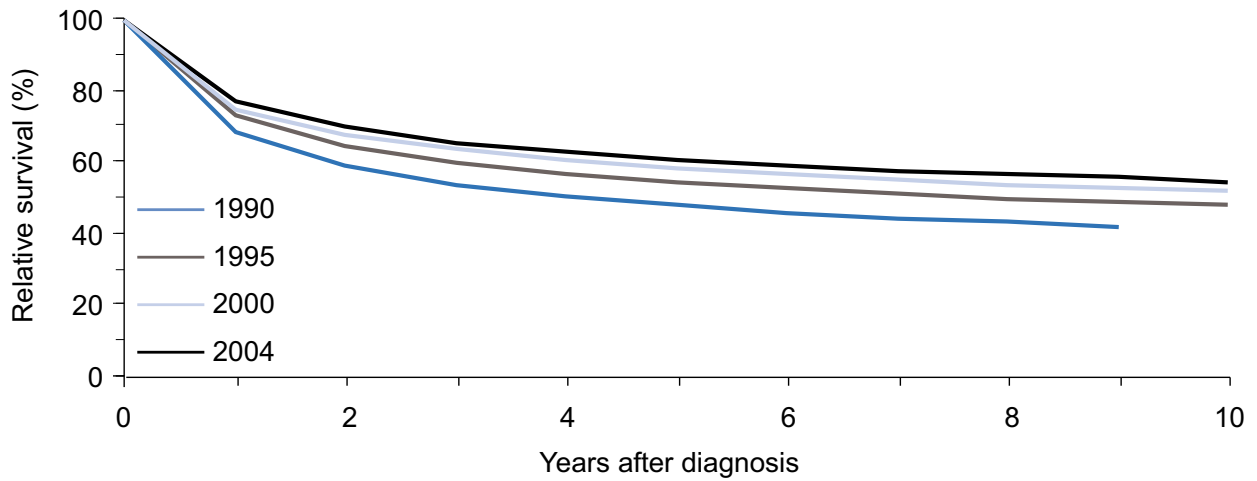
# ALL CANCER

**Table 1: Survival by years after diagnosis, sex, age group and tumour morphology for all Victorians with cancer in 2004 and for selected years from 1990.**

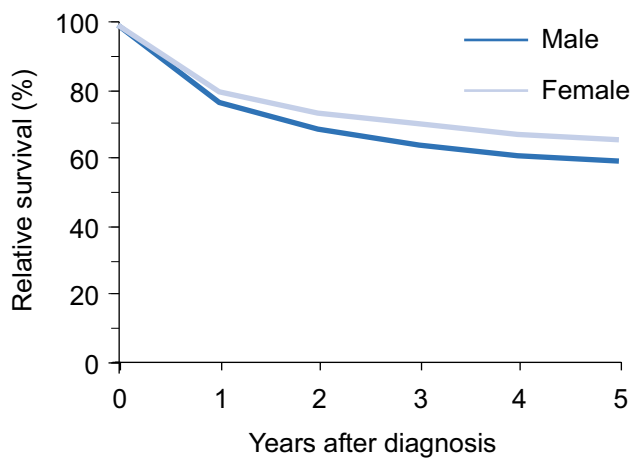
Years after diagnosis		Survival (%)	95% confidence interval	
1		77	(77-77)	
2		70	(69-70)	
3		66	(65-66)	
4		63	(62-63)	
5		61	(60-61)	
By subgroup	Number of deaths	5-year survival (%)	95% confidence interval	p-value
<b>All cases</b>	48,624	61	(60-61)	
<b>Sex</b>				<0.01
Male	28,199	58	(57-59)	
Female	20,425	64	(63-65)	
<b>Age at diagnosis</b>				<0.01
0-44	1,953	82	(81-83)	
45-54	3,603	74	(73-76)	
55-64	7,129	70	(69-71)	
65-74	13,715	59	(58-60)	
75+	22,224	43	(42-44)	
<b>Region of residence</b>				<0.01
Melbourne	32,950	62	(61-62)	
Rest of Victoria	15,638	59	(58-60)	
<b>Integrated Cancer Services Region</b>				<0.01
Southern	13,562	62	(61-63)	
Western & Central	8,198	58	(57-60)	
North Eastern	11,190	64	(63-65)	
Barwon South Western	4,175	58	(56-60)	
Grampians	2,403	59	(57-62)	
Loddon-Mallee	3,339	60	(58-62)	
Hume	2,721	59	(57-62)	
Gippsland	3,000	57	(55-60)	
<b>Tumour morphology group</b>				<0.01
Squamous and transitional cell	5,237	53	(51-55)	
Adenocarcinoma	22,162	70	(70-71)	
Other specific carcinoma	2,508	30	(27-33)	
Unspecified carcinoma	2,687	14	(12-16)	
Sarcomas and soft tissue tumour	520	67	(62-72)	
Kaposi sarcoma	25	87	(72-100)	
Mesothelioma	561	5	(3-8)	
Other specified types of cancer	4,166	75	(74-77)	
Leukaemia	1,730	42	(39-45)	
Lymphoma	2,145	68	(65-70)	
No histological confirmation	6,883	8	(7-9)	
<b>Selected years</b>				<0.01
1990		48	(47-48)	
1995		54	(54-55)	
2000		58	(58-59)	
2004		61	(60-61)	



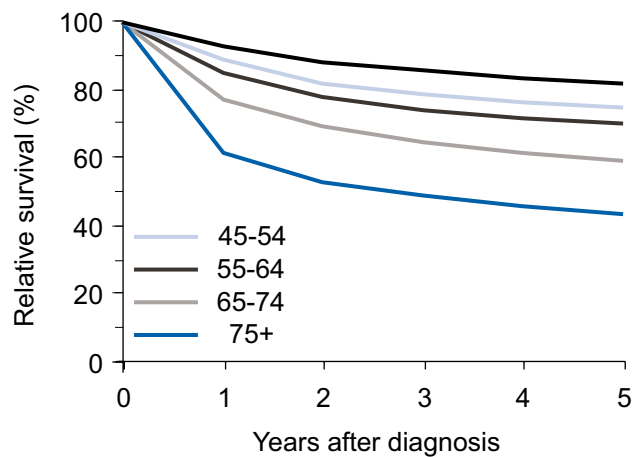
**Figure 1: Survival by year**



**Figure 2: Survival by sex**



**Figure 3: Survival by age group**



**Figure 4: Survival by tumour morphology**

