

User guide Victorian cancer slides

The following slides are available in separate PDF files:

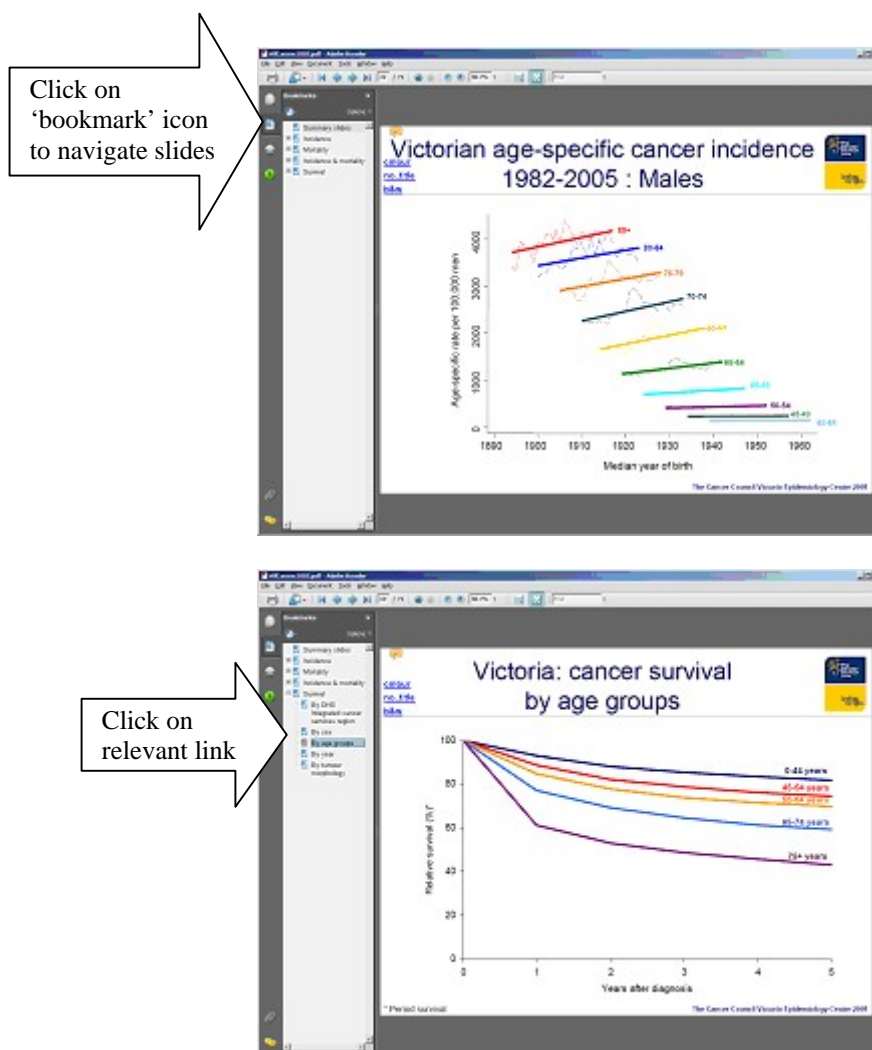
- All cancer in Victoria, 2005
- Bowel cancer in Victoria, 2005
- Breast cancer in Victoria, 2005
- Lung cancer in Victoria, 2005
- Melanoma in Victoria, 2005
- Prostate cancer in Victoria, 2005
- Cervical cancer in Victoria, 2005

(Please note: You will need Adobe Reader installed on your machine to access the slides.)

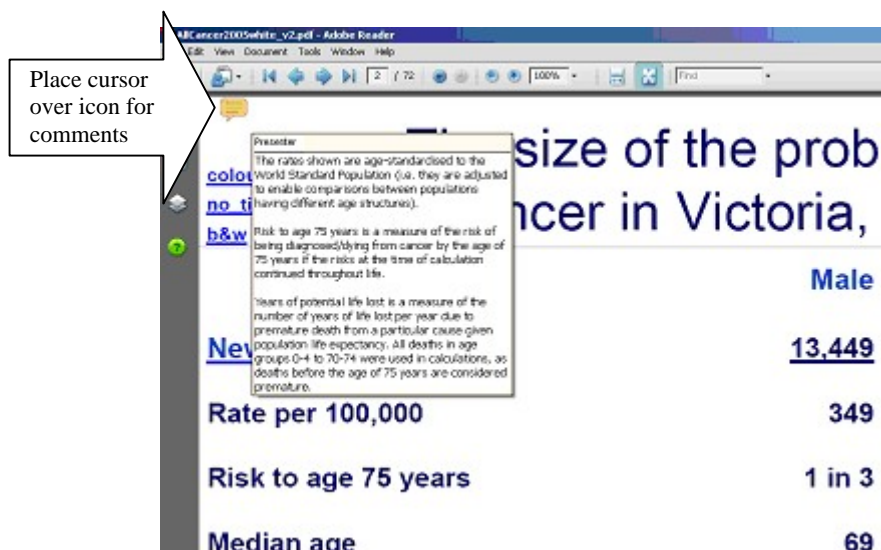
Each PDF contains the slides available for each cancer site and has the following features:

1. A **navigation panel** which allows you to navigate to different sections of the slides

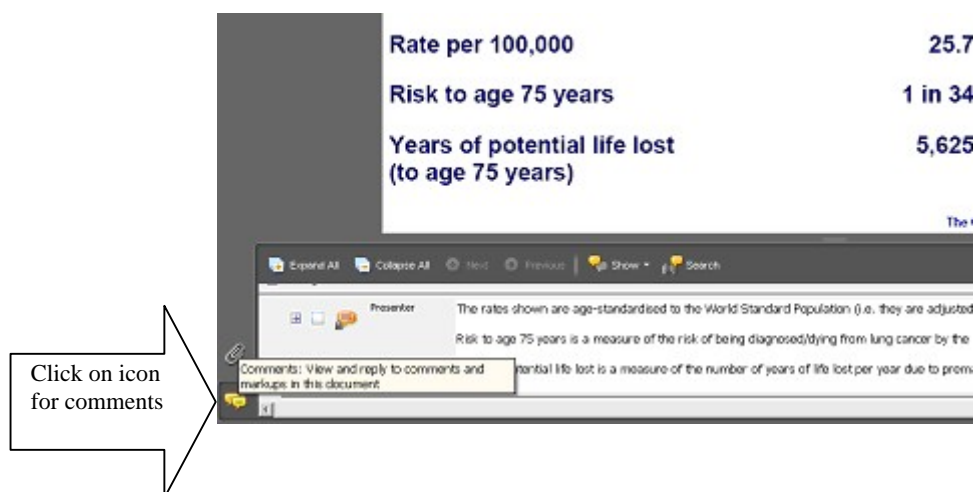
You can navigate to different sections of the slides by clicking on the bookmark icon and then clicking on a relevant link:



2. A **description** of the slide (for most slides) which can be viewed by moving the cursor over the comments icon at the top left hand corner of the page:



Descriptions can also be obtained by clicking on the comments icon near the bottom left hand corner of the page:



3. **Image files** that can be saved and inserted into your own presentation

Each slide is available in:

- Colour (PNG image file)
- Colour with no title (PNG image file)
- Black and white (GIF image file) (where possible)

Opening and saving an image for later use

To open an image file of a slide click on the link located in the top/bottom left hand corner of the slide:

	Male	Female	Total
New cases	13,449	10,959	24,408
Rate per 100,000	349	262	301
Risk to age 75 years	1 in 3	1 in 4	1 in 3
Median age	69	66	68
New deaths	5,396	4,388	9,784
Rate per 100,000	124	85	102
Risk to age 75 years	1 in 8	1 in 11	1 in 9
Years of potential life lost (to age 75 years)	31,258	28,914	60,172

or

Age-specific rate per 100,000

Median year of birth

Your browser settings will affect how an image opens upon clicking on a link. When clicking on a link the following may occur:

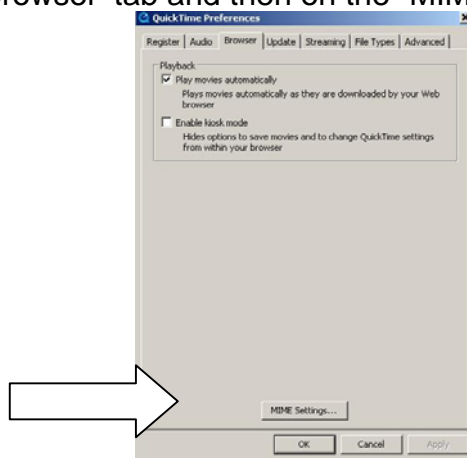
- (i) the image may open within a browser window
- (ii) you may be prompted to save the image
- (iii) the image may open within a program designed to display image files (such as Microsoft Photo Editor or Windows Picture and Fax viewer)

Note: If the image opens with QuickTime (within the browser), you will need to change the settings in QuickTime in order to save the images. You can do this as follows:

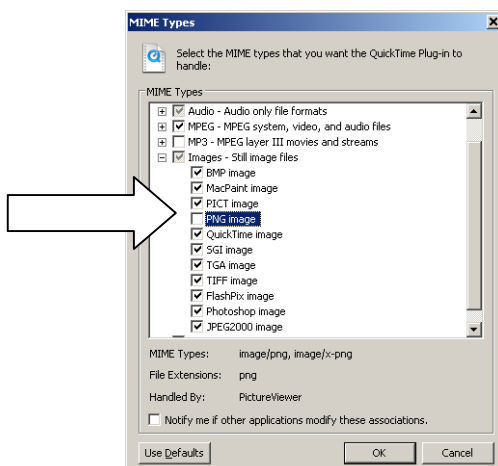
- (1) Open your QuickTime player and choose `Edit` and then `Preferences` followed by `QuickTime Preferences`:



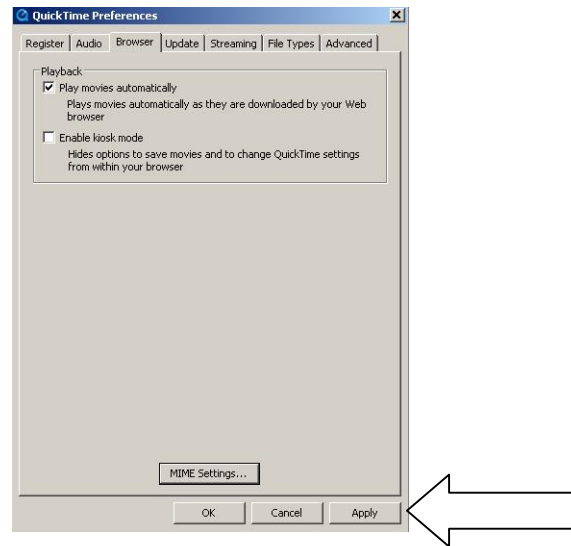
- (2) Click on the `Browser` tab and then on the `MIME Settings` button:



- (3) Expand the options for `Images – Still image files` by clicking on `+` then deselect `PNG image` and click on `OK`

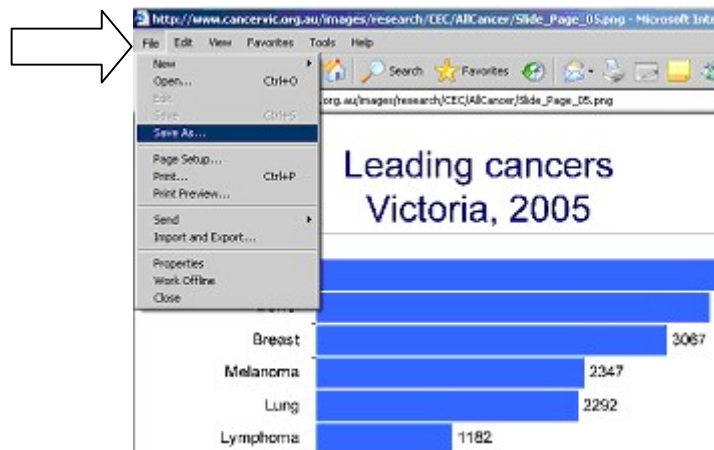


(4) Click on `Apply`:



(i)

If the image opens within a browser window you can save it by selecting `File` and then `Save As` as follows:



or

If you have an `image toolbar` you can click on the `Save this image` icon to save the image to your own computer as follows:



or

you can right click the image within the browser window and choose 'Save Picture As.....'

(ii)

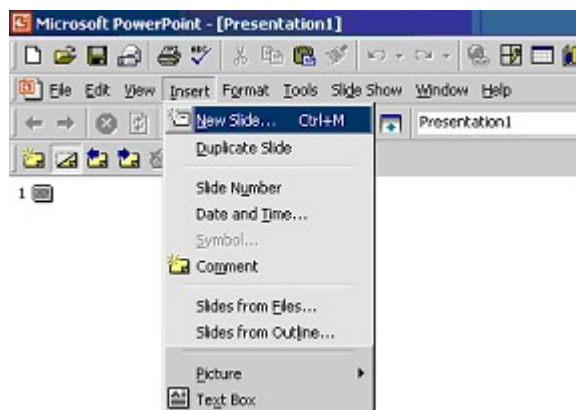
If you are prompted to open or save the image, you can choose 'save' to save the image to your computer.

(iii)

If the image opens within a program for viewing image files, you can save the file as you normally would within this program.

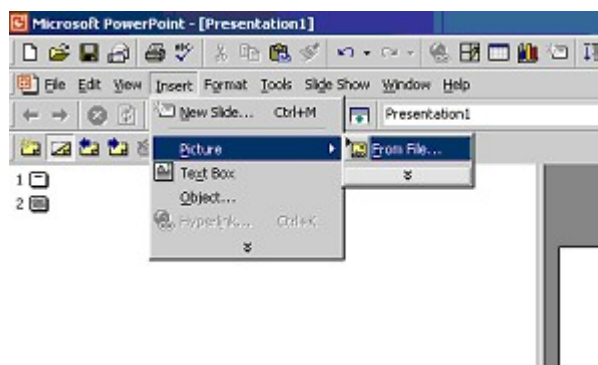
Inserting and using a saved image within a PowerPoint presentation

1. Open the PowerPoint presentation into which you would like to insert the slide (image)
2. Insert a new slide into your presentation as follows:
 - Click on Insert -> New Slide



3. Insert the image onto the slide

- Click on Insert -> Picture -> From File



- Select the image and click on 'insert'
- Re-size the image if necessary.