

LARYNX

The 5-year survival for people with cancer of the larynx is 64%.

Sex Survival was slightly higher for men (65%) than women (58%).

Age at diagnosis Older age at diagnosis was associated with worse survival.

Regional comparisons Survival was slightly higher for residents of Melbourne than the rest of Victoria.

Time trends Survival only marginally improved over the 15 year period.

A clinician's comment "An interesting change has occurred, in most centres, in the management of more advanced staged larynx cancer from total laryngectomy and post-operative radiotherapy to use of larynx preservation protocols (concurrent chemotherapy and radiotherapy with surgery, total laryngectomy being reserved as salvage for those cases that fail chemoradiation). As one would have predicted from previously published randomised studies, there is no detriment in patients' survival with this change in management. What these figures can't show is the potential for improvement in patients' quality of life with an intact larynx."

Table 1: Survival by years after diagnosis, sex and age group for Victorians with laryngeal cancer in 2004 and for selected years from 1990.

Years after diagnosis		Survival (%)	95% confidence interval	
1		85	(82-87)	
2		75	(72-78)	
3		70	(67-74)	
4		66	(63-70)	
5		64	(60-68)	
By subgroup	Number of deaths	5-year survival (%)	95% confidence interval	p-value
All cases	304	64	(60-68)	
Sex				0.25
Male	261	65	(61-69)	
Female	43	58	(47-67)	
Age at diagnosis				<0.01
0-54	28	73	(64-80)	
55-64	73	65	(58-71)	
65-74	107	65	(59-71)	
75+	96	59	(48-69)	
Region of residence				0.71
Melbourne	207	65	(61-70)	
Rest of Victoria	97	62	(55-69)	
Selected years				0.62
1990		66	(59-73)	
1995		66	(59-73)	
2000		70	(64-77)	
2004		64	(60-68)	

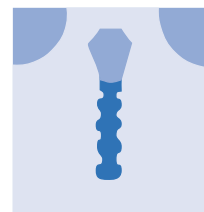


Figure 1: Survival by year

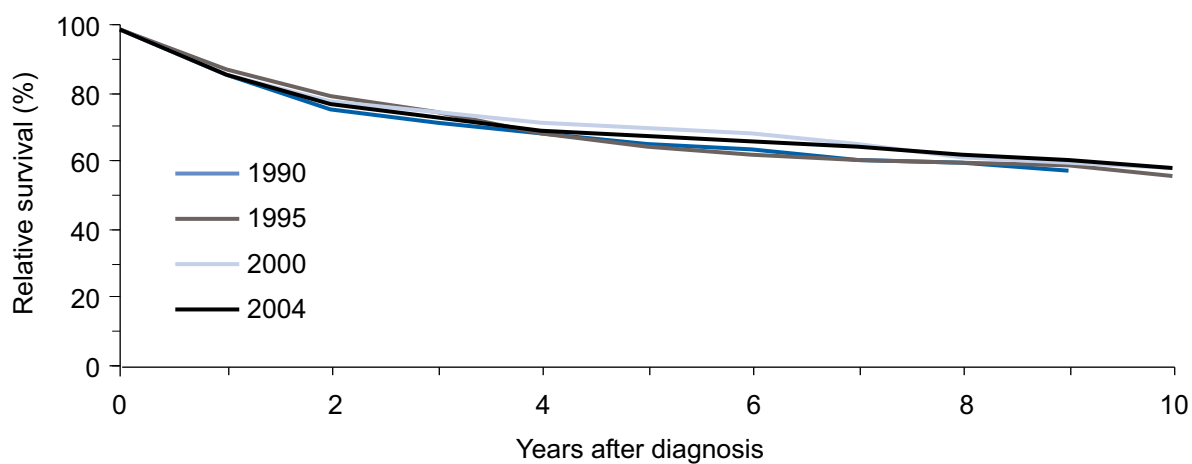


Figure 2: Survival by sex

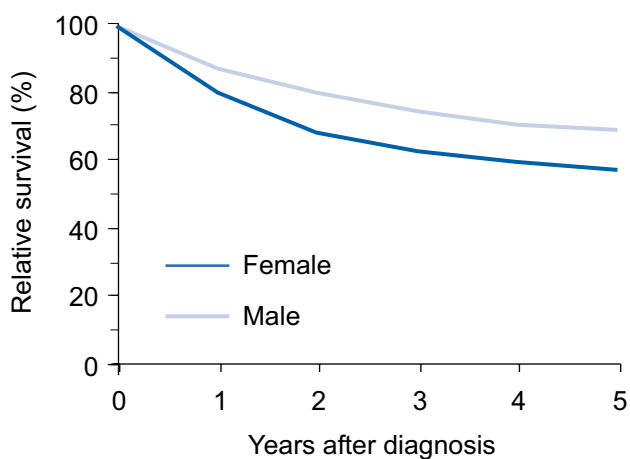
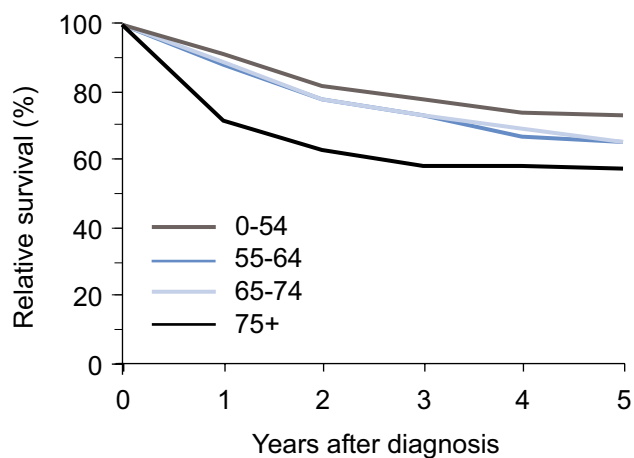


Figure 3: Survival by age group



LUNG

The 5-year survival for people with lung cancer is 11% and is higher for women (14%) than for men (9%).

Age at diagnosis Increasing age at diagnosis is associated with worse survival, with proportions of 33% for persons under 45 years falling to 6% for persons over 75 years at diagnosis.

Tumour morphology Survival was higher for persons diagnosed with non-small cell carcinoma (15%) than with either small cell carcinoma (4%) or tumours without histological confirmation (2%).

Regional comparisons Survival was slightly higher for residents of Melbourne than the rest of Victoria and this was reflected in the proportions for individual ICS regions..

Time trends There have been modest increases in survival over the 15 years from 1990.

A clinician's comment "Survival remains poor reflecting the frequency of disease disseminated at diagnosis. Patients with no histological confirmation are likely to have widespread disease and significant co-morbidities making them unfit for diagnostic procedures or active treatment. The higher survival of patients with non-small cell lung cancer is due to a proportion having localised disease who can have a curative resection. The age-related decline in survival may be due to the fact that older patients may be less likely to be offered aggressive, potentially curative, treatments because of a lower level of fitness. The better survival for women may be due to the larger proportion of non-smokers who do not have smoking-related co-morbidities. The improvement of survival over time suggests that more widespread use of active treatments may be having a beneficial effect."

Table 1: Survival by years after diagnosis, sex, age group and morphology for Victorians with lung cancer in 2004 and for selected years from 1990.

Years after diagnosis	Survival (%)	95% confidence interval
1	35	(33-36)
2	20	(19-21)
3	15	(14-16)
4	12	(11-13)
5	11	(10-12)

By subgroup	Number of deaths	5-year survival (%)	95% confidence interval	p-value
All cases	8,908	11	(10-12)	
Sex				
Male	5,769	9	(8-10)	<0.01
Female	3,139	14	(12-16)	
Age at diagnosis				<0.01
0-44	136	33	(22-44)	
45-54	559	17	(13-22)	
55-64	1,637	15	(13-18)	
65-74	3,052	11	(10-13)	
75+	3,524	6	(5-8)	
Region of residence				<0.01
Melbourne	6,032	12	(10-13)	
Rest of Victoria	2,870	9	(8-11)	
Integrated Cancer Services Region				<0.01
Southern	2,515	12	(10-14)	
Western & Central	1,649	10	(8-12)	
North Eastern	1,868	12	(10-14)	
Barwon South Western	731	10	(7-13)	
Grampians	429	8	(4-12)	
Loddon-Mallee	642	8	(5-11)	
Hume	504	11	(7-15)	
Gippsland	564	8	(5-12)	
Tumour morphology group				<0.01
Non-small cell carcinoma	5,842	15	(14-17)	
<i>Adenocarcinoma</i>	2,361	17	(15-19)	
Small cell carcinoma	1,388	4	(3-6)	
No histological confirmation	1,678	2	(1-3)	
Selected years				<0.01
1990		8	(7-8)	
1995		10	(9-11)	
2000		13	(12-14)	
2004		11	(10-12)	



Figure 1: Survival by year

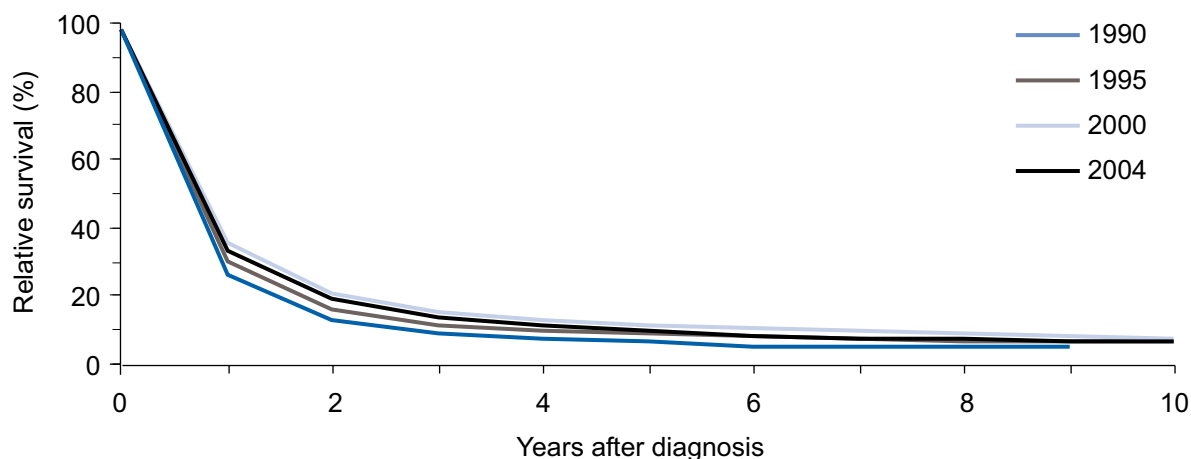


Figure 2: Survival by sex

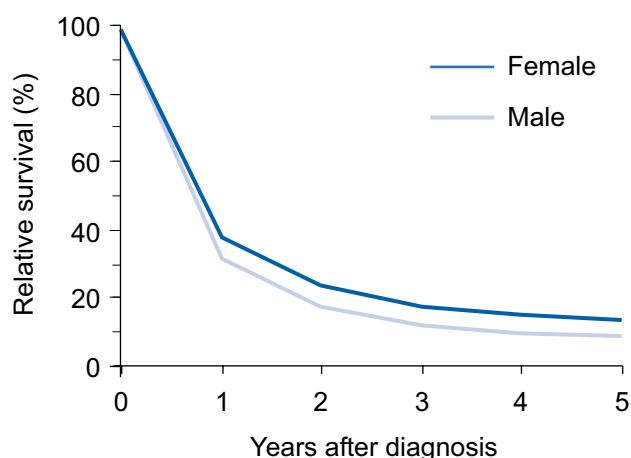


Figure 3: Survival by age group

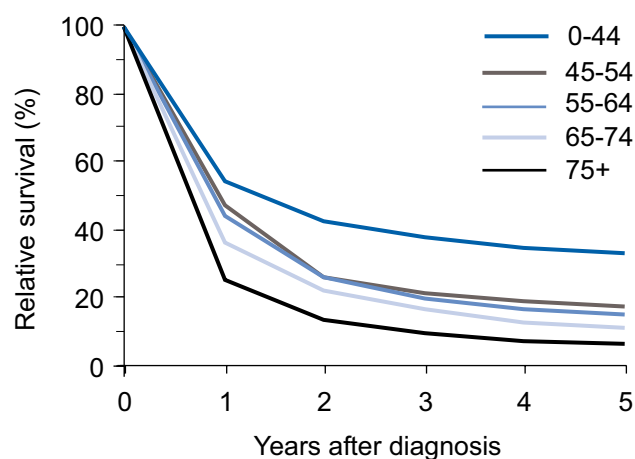


Figure 4: Survival by tumour morphology

